



# Decorative Mesh

## Quality Comparison

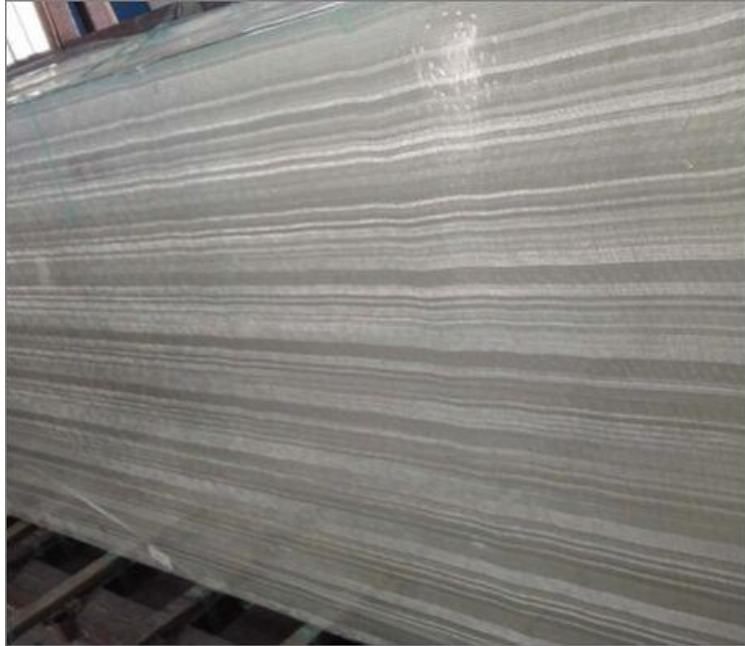
*JBL Architectural Mesh-Trusted supplier of architectural mesh and wire mesh  
for external  
And internal Full design, fabrication, Customized  
OEM & ODM Service*

*Metal Mesh for Architecture and Interiors*

# Product



**Others**



**Ours**



*Metal Mesh for Architecture and Interiors*

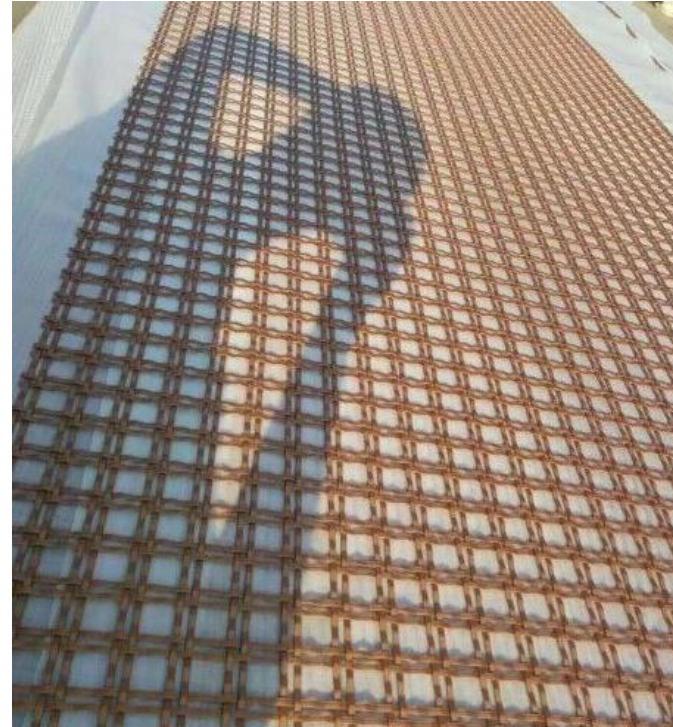
# Product



**Others**



**Ours**



*Metal Mesh for Architecture and Interiors*

After 1~2 years



**Others**



**Ours**



*Metal Mesh for Architecture and Interiors*

# After 1~2 years

**Others**



**Ours**



*Metal Mesh for Architecture and Interiors*

# Production Workshop



## Others



## Ours



*Metal Mesh for Architecture and Interiors*

# Good grade of raw material. NOT Recycle Material



序号 NO	材质 Grade	种类 Sort	炉号 HeatNo	规格 Dia (mm)	重量 N. W. (kg)	件数 Pcs	机械性能 (Mechanical properties)						偏差值 Tolerance (Dia)
							抗拉强度 TS (MPa)	延伸率 EL (%)	屈服强度 YS (MPa)	硬度 Hardness			
										HRB	HRC	HV	
1	304	WEA	S251909002	1.60	669.60	13	695	53					
2	304	CDP	S251908021	5.00*4000	841.00	2	1238						
3	304	WEA	S131909034	1.50	257.10	5	697	49					
4	304	WEA	S251908006	1.60	219.80	4	667	55					
5	304	CDP	S131909061	8.00*3125	805.00	2	970						
6	304	CDP	S131909126	10.00*5000	2,015.00	4	921						
7	304	WEA	S251909018	1.50	834.00	16	678	45					

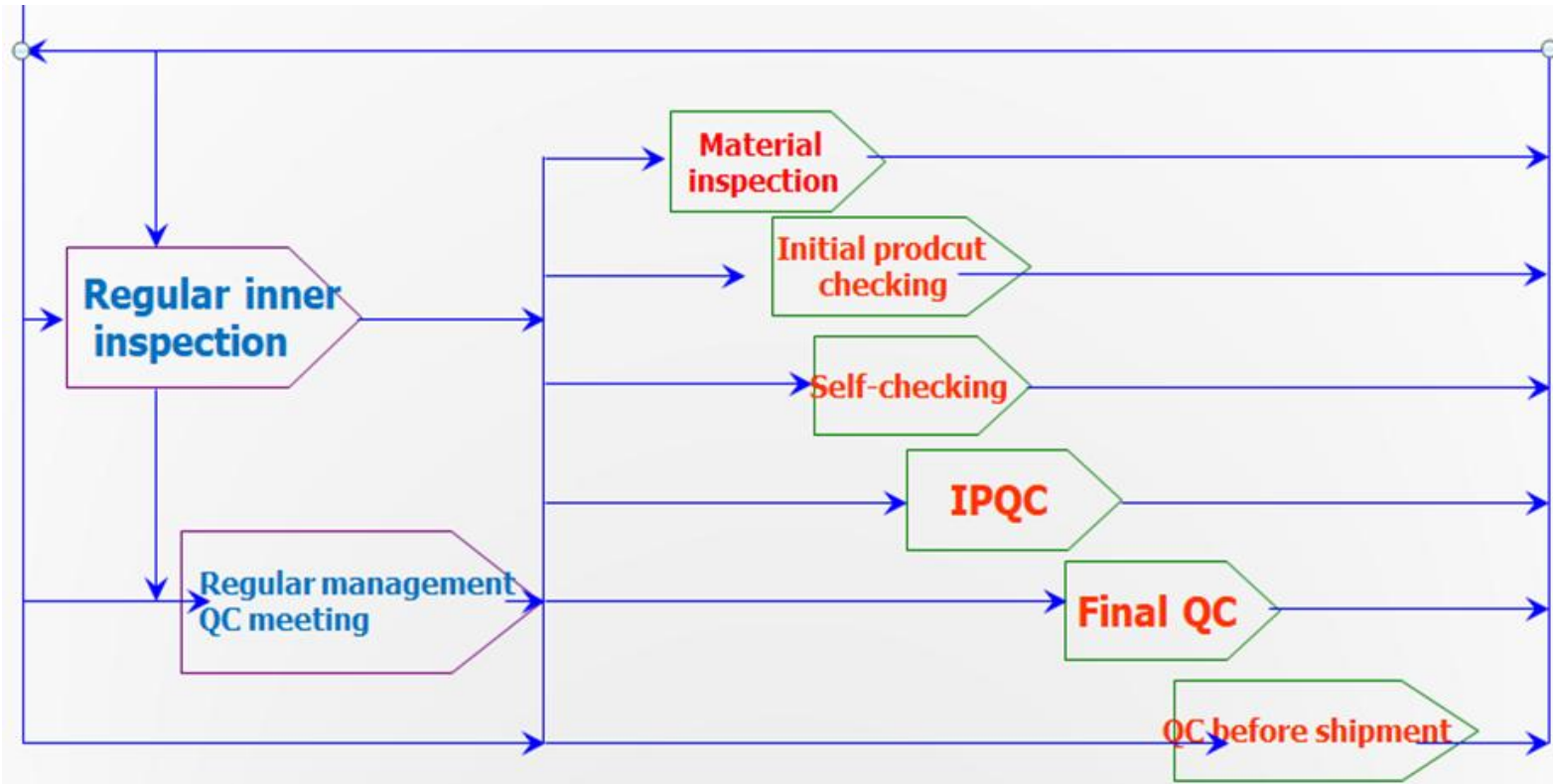
序号 NO	炉号 Heat No	化学成分 (%) Chemical Composition (%)												
		C	Si	Mn	P	S	Cr	Ni	Mo	Cu	N	Ti	Al	Nb
		1	S251909002	0.03	0.38	1.1	0.035	0.004	18.12	8.02				
2	S251908021	0.025	0.34	1.09	0.037	0.002	18.22	8.06						
3	S131909034	0.033	0.362	0.8	0.037	0.001	18.25	8.07						
4	S251908006	0.036	0.28	1.09	0.036	0.004	18.02	8.01						
5	S131909061	0.05	0.405	0.941	0.035	0.002	18.2	8						
6	S131909126	0.035	0.379	0.739	0.042	0.001	18.21	8.05						
7	S251909018	0.035	0.43	1.45	0.038	0.004	18.09	8.04						

序号 NO	材质 Grade	种类 Sort	炉号 HeatNo	规格 Dia (mm)	重量 N. W. (kg)	件数 Pcs	机械性能 (Mechanical properties)						偏差值 Tolerance (Dia)
							抗拉强度 TS (MPa)	延伸率 EL (%)	屈服强度 YS (MPa)	硬度 Hardness			
										HRB	HRC	HB	
1	316	EPQ	1206A284	2.00	2,485.10	22	1003						
2													
3													
4													
5													
6													
7													

序号 NO	炉号 Heat No	化学成分 (%) Chemical Composition (%)												
		C	Si	Mn	P	S	Cr	Ni	Mo	Cu	N	Ti	Al	Nb
		1	1206A284	0.040	0.38	1.04	0.037	0.001	16.52	10.07	2.03			
2														
3														
4														
5														
6														
7														

*Metal Mesh for Architecture and Interiors*

# QA Quality Control



*Metal Mesh for Architecture and Interiors*





**Thanks for your attention**

**Tel: 0086-512-5012 8446**

**E-Mail: [spring@jblmetal.com](mailto:spring@jblmetal.com)**

**Website: [www.jblmetal.com](http://www.jblmetal.com)**

***JBL Architectural Mesh-Trusted supplier of architectural mesh and wire mesh  
for external***

***And internal Full design, fabrication, Customized  
OEM & ODM Service***

***Metal Mesh for Architecture and Interiors***